

HOMEWORK: Triple-Cloth Tablecloth

Instructor: Heather MacKenzie

Draft adapted from "Swedish Lace Border" in M. Davidson's A Handweaver's Pattern Book.

EQUIPMENT

8-shaft loom, 21" weaving width; 10-dent reed (can use 12, 15, 20);
one shuttle with bobbins.

YARNS

Warp: 10/2 mercerized cotton (4410 yards @ 4200 yards per pound); 21 yards of 10-lb monofilament (added separately at the end)

Weft: 10/2 mercerized cotton (3150 yards)

Warp and weft can be the same color, or contrasting colors to take full advantage of the blocks. I will be weaving a warp that is half cream and half I-haven't-decided yet with a weft that is probably also cream ☺

WARP LENGTH

1260 ends, 3 ½ yards (allows 7" for take-up and 33" for loom waste)

SETTS

Warp: 60 epi (20 epi per layer); **Weft:** 20 ppi (20 ppi per layer); this may vary depending on how hard you beat – it is a lower sett than is standard with 10/2 cotton. When weaving triple cloth, I find it hard to create a really dense cloth because you are always fighting the multiple layers. For me, this works with the Swedish Lace structures.

DIMENSIONS

This tablecloth is designed to fit my dining table, which measures 32" x 54". I am happy to help you determine the dimensions for your table too.

Width in reed: 21"

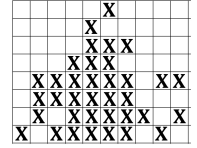
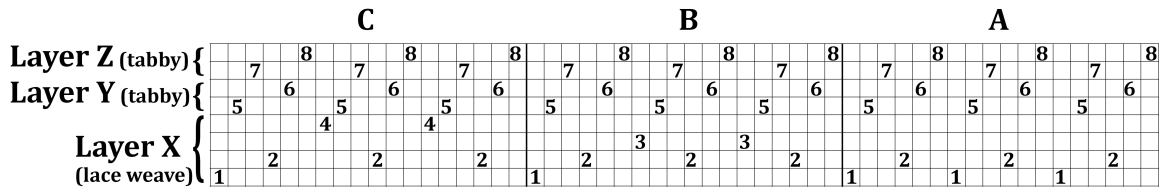
Woven length (measured under tension): 90"

Finished size (after washing/hemming): approx. (at LEAST) 56" x 78"

INSTRUCTIONS

1. Sample first, and wind 360 ends at 2 yards long to make a 6" sample, **OR** jump right in (like me!), and wind 1260 ends 3 ½ yards long at 60 epi. Use your preferred method to warp the loom and thread following according to the draft on the following page. Sley your 10-dent reed with 6 threads per dent.
2. With each of the three ends at the edges of your warp, thread one end of monofilament. Weight the bundles of three strands with an improvised weight off the back of the loom (doesn't have to be very heavy - a plastic water bottle works nicely). These will be pulled out of the cloth at the end, but they help reduce draw in where the triple-cloth folds.
3. Treadling block A (tabby), use some scrap yarn to spread the warp. Wind your bobbin with your weft yarn, and continue weaving block A with this yarn. Be consistent with how you throw your shuttle – ie, when beginning to treadle a block, always throw the shuttle from the same side. Otherwise layers may get woven together.

Threading Blocks:

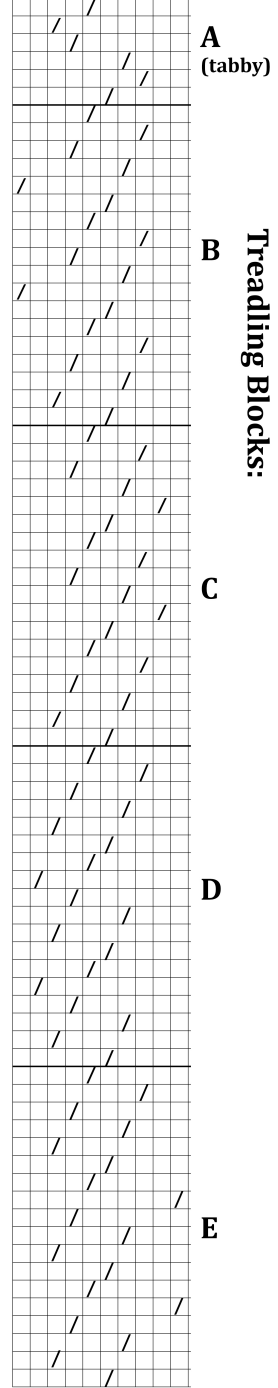


Threading -	1260 ends (full tablecloth):	360 ends (sample):
Block B	- 126 ends	- 126 ends
Block C	- 1008 ends	- 108 ends
Block B	- 126 ends	- 126 ends

4. Treadle and weave block A for 22.5"; then block B for ~2" (7 blocks); then block C for 41" (~136 blocks – finish block repeat); then block B for ~2" (7 blocks – same as previous block B section); then block A for 22.5". Weave a half an inch of scrap yarn (following block A) to secure the edge of your cloth, and cut it off the loom!

* always finish the treadling for a block before switching to the next block (even if you weave a little more than 2" of block B, or more than 41" of block C)

5. If all is well, it should unfold into three times the width of the loom. Now is the time to address any moments where a lazy warp thread has caught another layer, or other issues.
6. I use 50% watered down Elmers glue (or other water-soluble glue) to temporarily secure the edge before I cut off the scrap material and hem – you can use a brush or a small sponge to paint this along the last few true picks of your weaving at both ends of the cloth. Once dry, trim off the scrap material, iron ½" fold, and then turn and iron again. Hem by hand using a blindstitch.
7. Machine wash and dry on regular settings, and then press with a hot iron.



4-SHAFT LOOM Variation (this will involve stitching three panels together):

EQUIPMENT:

4-shaft loom with 21" weaving width; 12-dent reed; one shuttle.

YARNS and SETTS:

Warp: 10/2 mercerized cotton at 24 ppi (4284 yards); **weft:** 10/2 mercerized cotton at 24 ppi (3780 yards)

WARP LENGTH:

504 ends at 8 1/2 yards long

DIMENSIONS:

In reed: 21"

Woven length (under tension on loom): 270" (to be cut to 3 panels)

Cut, pieced, and hemmed: ~58" x 80"

THREADING:

- Block A - 24 ends
- Block B - 48 ends
- Block C - 360 ends
- Block B - 48 ends
- Block A - 24 ends
- Total: 504 ends

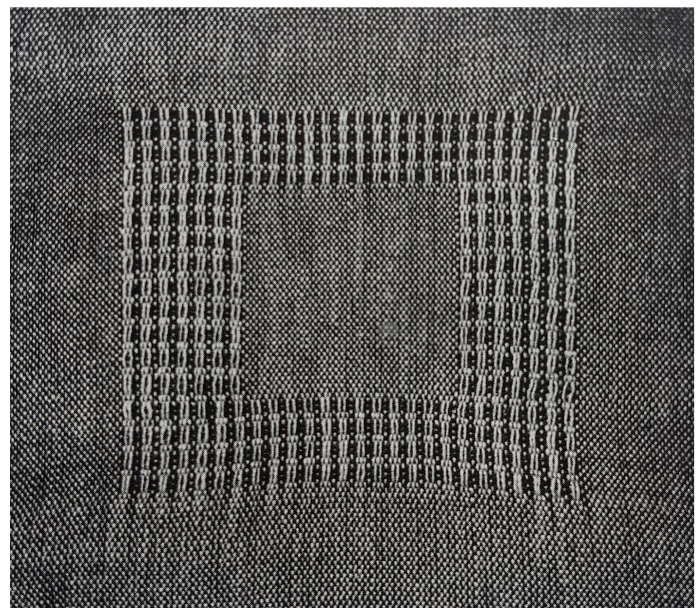
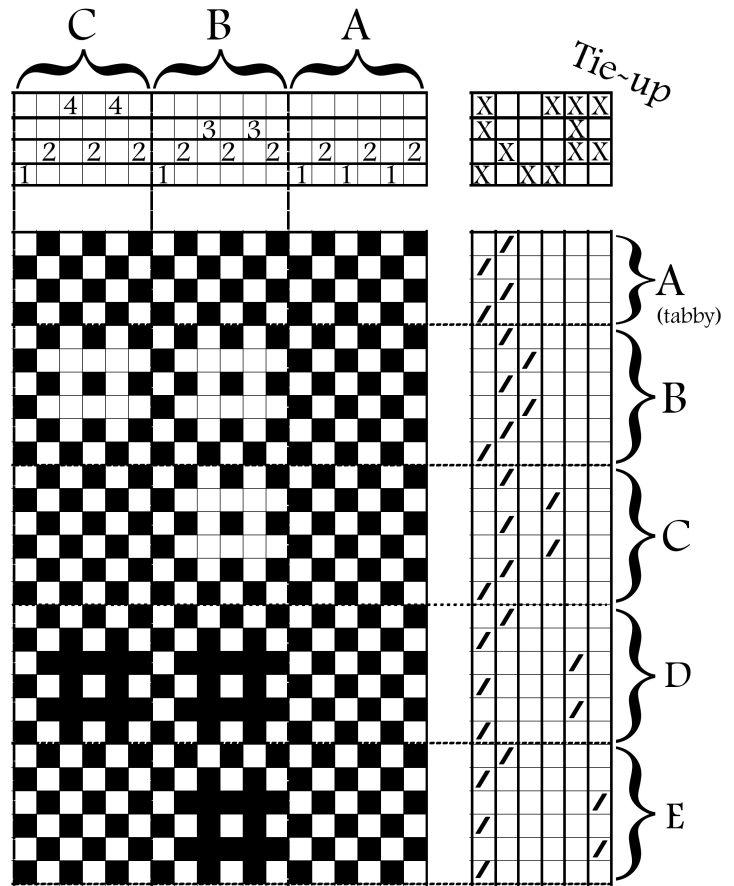
WEAVING:

Panel 1 & 3: Panel 2:

- Block A Block A - 48 picks (2")
- Block B Block D - 48 picks (2")
- Block C Block E - 372 picks (15.5")
- Block B Block E - 48 picks (2")
- Block A Block A - 48 picks (2")
- Block D Block B - 48 picks (2")
- Block E Block C - 936 picks (39")
- Block D Block B - 48 picks (2")
- Block A Block A - 48 picks (2")
- Block B Block D - 48 picks (2")
- Block C Block E - 372 picks (15.5")
- Block B Block D - 48 picks (2")
- Block A Block A - 48 picks (2")

Total: 90" (each panel)

Threading blocks



Treadling blocks