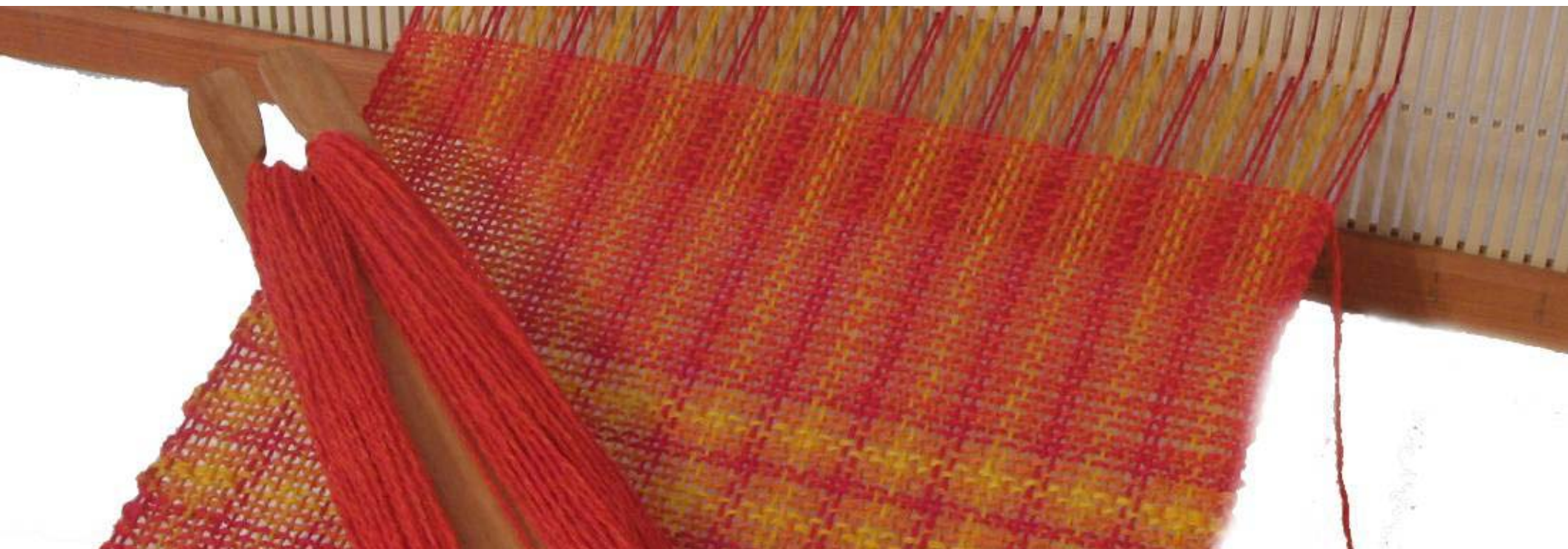




Weavers Guild of Minnesota

ANNUAL REPORT September 1, 2011-August 31, 2012

WGM - Preserving and advancing the arts of weaving, spinning and dyeing.



Letter from Our Presidents

Responding to an unusual challenge can demonstrate the strength of an organization. In 2012, our special challenge was to survive the light rail construction that would make finding parking and even our front door difficult. WGM was constantly trying new approaches to keep the office, classes and member activities accessible despite lane changes, detours, and closed side streets.

First, the Guild established representation on the city's Construction Communications Committee. Then, information was distributed by a weekly email to members, keeping them current on the latest construction developments. Students received notices, and maps with key access routes and available parking spots were constantly updated on the Guild's website. Comment cards and quick surveys helped our members, students, and visitors relay their suggestions for additional assistance. Several member meetings were held at a church in Dinkytown during the summer to avoid the construction all together. The Guild also took the risk of changing venues of its annual sale "Fiber Fair" from our home-base of the Textile Center to the Northrup King Building, a move appreciated by many patrons who did not want to traverse through the construction.

We heard from other non-profit organizations that their class registrations suffered dramatically during similar construction. Yet due to the hard and creative work of many members and staff, WGM was able to celebrate a very positive year and the end of construction at our December potluck.

We are proud that we could use our creativity to not only survive, but thrive!



Cathie Mayr, President 2012



Donna Gravesen, President 2013

Pictured below: Construction in front of the Guild; Board Member Ellen Richard stands in front of construction-inspired rugs woven by the Guild's Rag Rug Study Group.



Membership

Jere Thompson, Membership Chair

Membership efforts this past year focused on developing tangible outcomes from the strategic plan completed by the Board in 2011. Former members and relatively new members were surveyed about their ideas of the Guild, like their reasons for joining, what benefits they expected, and in what activities they enjoyed participating. From the survey responses, a discussion guide was prepared and used in small group discussions, during which participants were asked to react to possible solutions to member concerns. A list of short and long range recommendations summarizing this research was given to the Guild's board of directors, and then I worked with several board members to develop plans for implementing some of the recommendations. Foremost was making study groups seem less intimidating to new members and finding ways to foster member interaction. In addition, all members were invited to an on-site orientation to explain Guild benefits and procedures.

When we learned more about the needs of our members, it was clear that the Guild had to update its technological infrastructure. A task group was formed, consisting of the Volunteer Coordinator, the Operations Manager, a consultant, and myself. We determined that association management software and supporting technology were needed in order to sustain current operations, execute the Guild's strategic plan, and support evolving member and student activity. The Guild was awarded a capital grant from the Metropolitan Regional Arts Council to obtain new software and hardware. We look forward to benefiting from the technology when it is implemented in 2013.

Lastly, the Guild continues to evaluate the benefits of being a member. Besides being part of a community of friendly, creative individuals, we are happy to offer members a well-rounded list of benefits:

Continuing to learn new techniques and project ideas from our talented instructors by taking part in classes and workshops at the discounted member rate.

Finding inspiration by going through the Guild's collection of swatches, checking out materials from the Textile Center Pat O'Connor Library, or purchasing new, donated, and consigned-by-members yarn in Fiber Source.

Connecting to others in our fiber community by participating in fabulous groups, staying informed through the members-only weekly e-publication *The Draft*, sharing ideas on the WGM Yahoo chat group, and volunteering on a committee or demonstrating at an event.

LEARNING

Education Program

Linda Hansen, Education Director

The Education Program has recently piloted private lessons and partnerships with off-site organizations. These two new initiatives have stretched the Guild's limits and extended its audience reach; both have now become an integral part of programming. The individuals and arts or social entities newly connected to WGM receive top-notch learning opportunities; a beginning student may find learning options to fit a busy schedule, and new audiences lacking ready access to fiber arts are able to participate in weaving classes through a local venue.

The response to education continues to engage and excite WGM's professional teaching artists as they share their expertise and talents with people of all ages and skill levels. Approximately 90% of the courses held serve beginning or advanced beginning students. The novice or curious flock to the *Try It* classes, while enthusiasts pursue spinning and weaving skill building techniques on the spinning wheel and floor loom or on the increasingly popular rigid heddle frame loom. The Guild's expanded educational offerings showcase a creative curriculum with classes such as *Rep Weave & Color*; *Fine Threads on the Rigid Heddle*; *Log Cabin Variations: Recycled Denim, T-shirts & Neckties Rug*; *Art Yarn Spinning on Any Wheel*; and *Paint a Wool Roving*. Other arts learning opportunities challenge and inspire students through courses such as *Spinning for Knitters*; *Ply Split Braiding*; *pixeLoom®*; *Inkle Weaving Wire Jewelry*; and *Weaving Luxury Linen*, the last of which used the 16-shaft Compu-Dobby AVL loom.

Indeed, there is something for everyone at WGM, since, in addition to its fiber arts learning activities for adults, the Guild also collaborates with the Textile Center Summer Camps. In these camps, young people ages 9 to 14 spend a week in classes such as *Break the Rules* and *Thread by Thread*, jumping from the spinning wheel to the inkle loom or from the drop spindle to the rigid heddle frame loom or the floor loom.

The fervor of activity at the Guild, as well as the dedication of the Education Committee and its Task Group volunteers, continue to create an Education Program that can best be summed up with students' comments. "Fun and relaxing way to spend a weekend!" "Great class! Thanks." "What a super teacher. It's great fun to take her classes. And you always learn something new." "WGM classes are always exceptional and a wonderful learning experience!"

CLASSES & WORKSHOPS

27 Teaching Artists for 91 Classes
9 Classroom & AVL Assistants in 13 Classes
37 Private Lesson Students for 205 Classroom Hours
7 Visiting Artists for 10 Workshops

STUDENTS

580 Students: 394 Member Students,
186 Non Member Students

TYPES OF CLASSES

25 Floor Loom, 16 Try It,
16 Frame (Tapestry & Navajo),
14 Spinning, 8 Rug, 8 Off-Loom,
2 Dyeing

OFF SITE LOCATIONS

American Swedish Institute
Bloomington Theatre & Art Center
Lyngblomsten 5 5 1 Club



Visiting Artists & Programs

Lectures by nationally and internationally recognized fiber artists are open to the public and admission is free.

Ruby Leslie *The 3D's of 3-D: Deflection, Differential and Double Weave*

Laura Viada *Color Studies for Weavers*

American Craft Council

Karen Searle *Weaving a Real Peace*

Judith MacKenzie *Diameter Control*

Patricia Ewer *Introduction to Textile Conservation*

Jane Patrick *Creative Cloth: Not Just for the Rigid Heddle Loom*

Deb Robson *Rare Sheep and Their Wool: Treasurer We Can't Afford to Lose*

Workshops led by recognized visiting artists, covering a variety of weaving and spinning topics.

Ruby Leslie *The 3D's of 3-D: Deflection, Differential and Double Weave*

Laura Viada *Exploring Thick'n Thin*

Judith MacKenzie *Luxury Fibers and To Spin a Fine Thread*

Patricia Ewer *Textile Conservation*

Deb Robson *Rare Wools from Rare Sheep*

INSPIRATION

Exhibits

Throughout the year, the Guild displays works created by current and past WGM Members. These works serve as inspiration for visitors, students and fellow members.

Weavers Guild of Minnesota at the

State Fair September to October 2011

Spin, Spin, Spin *woven pieces from hand spun yarn* November to December 2011

Double Bind Weave Rugs *Rag Rug Study Group project* January to March 2012

Second Time Around *Woven, braided, or spun articles created from recycled materials or stash yarn.* March to May 2012

Paula Pfaff: Spun Gold Award May to June 2012

Trying Something Different: Unusual Fibers for Weaving June to August 2012



Fiber Source

WGM's specialty store, Fiber Source, is one of the few resources in the region that carries supplies specifically for weaving and spinning.

Fiber Source offers a complete supply of yarns for weaving; books on weaving, spinning, dyeing; and equipment for weavers and spinners. Customers, who are general visitors, students, and WGM members, can take advantage of knowledgeable support in selecting supplies for their craft.

WGM benefits from generous donations of used weaving and spinning equipment, as well as weaving yarn. WGM volunteers price and sell these items to the public, and the proceeds go directly to supporting the Guild's operations.

Library

The Weavers Guild of Minnesota Library includes an extensive swatch collection, periodicals, and rare and current fiber art books. The collections are generally maintained by the Guild's Library Committee and Archive Committee. The remainder of the Guild's books is maintained as part of the Textile Center's combined library.



The Guild makes a financial contribution to the Textile Center to assist in the maintenance of the library and the support of the professional librarian, Nancy Mambi, who is responsible for the stewardship of this unique collection.

Besides the over two hundred books in the WGM Reference Library, used by members and students in class, 4,000 of WGM's books and magazines are a part of the Textile Center Library.

Every year the Guild acquires several new books to add to the Textile Center Library's collection of 19,000 circulating and reference items.

Annual Sale

Each November the Weavers Guild of Minnesota hosts Fiber Fair, an annual sale of fiber art created by WGM members. The sale provides members with an opportunity to showcase and sell quality work, as well as connect with dedicated patrons who return to the sale every year.



In 2011, the Guild celebrated 37 years of holding Fiber Fair. Seventy artists were represented, and their work earned \$47,000 in sales. The artists receive 75% of the sales, and WGM keeps 25% to cover the costs of the event.

A special ticketed opening night was offered to shoppers who wanted the benefit of buying items before the weekend crowd. Guild volunteers gave the shoppers an elegant evening complete with wine, hors d'oeuvres, and personal shopping assistance. In conjunction with the sale, the Guild was thrilled to host the Tiffany Circle, women philanthropists of the American Red Cross.

CONNECTING

Community Outreach

WGM Members served approximately 90,000 people through demonstrations and hands-on learning. Volunteers hosted groups at the Guild, like design classes from The Art Institute of Minneapolis and Century College. Volunteers demonstrated at Craftstravaganza, Shepherd's Harvest Festival, Walker Art Center, Lyngblomsten Senior Care, and area libraries. The 2012 Minnesota State Fair marked a 60-year tradition of the Weavers Guild of Minnesota members demonstrating and exhibiting all days of the fair.

Pictured below: Bonnie Buzza (left) and Cecily Beierle (right) at the Walker Art Center's Open Field; Connie LaTendresse (center) at the Maple Grove Arts Festival.



Volunteerism

The Weavers Guild of Minnesota is very proud to have volunteering as a hallmark of our organization. Our Guild operates with two full-time and one part-time staff members and almost two hundred volunteers.

Our volunteers are comprised of members who serve between a few hours per week and an hour or two per month. They serve on the Board of Directors, manage the specialty store Fiber Source, maintain the Guild archives, coordinate exhibits, demonstrate during special events, bring weaving and spinning to community groups in their own neighborhoods, and so much more. Every volunteer hour is welcomed and greatly appreciated. Volunteers are recognized and celebrated at a banquet event in the spring.

In the past fiscal year, nearly 3000 volunteer hours were logged by WGM members.

Study Groups

These support and focus groups are member-led, and they gather to discuss topics of specific interest. Some groups enjoy working on projects, culminating in an exhibit or a swap amongst study group members.

Banditos (band-weaving)
Dobby Weavers
Draw Loom Weavers
Rigid Heddle Study Group

Rag Rug Study Group
Scandinavian Weavers
TuesDAY Spinners
Whorling Spinsters

Guild Space

The Weavers Guild of Minnesota has been the anchor tenant in the Textile Center since 2001. The Guild leases space with three permanent classrooms, a kitchenette, an office and store area. As needed, the Guild rents from the Textile Center the auditorium space for larger meetings and the state-of-the-art dye lab for classes and workshops.



Our classrooms are fully equipped with three dozen floor looms, a computerized loom, two dozen spinning wheels, frame and inkle looms, and tools for students and members to use. Most of the Guild's study groups meet at the Textile Center to use the space and equipment. Members also use the classrooms as studio space to work on independent projects.

Celebration

The Guild's longest-time member, Lila Nelson, celebrated her 90th birthday in April 2012. The Guild held a party for Lila in conjunction with the third annual silent auction. The party included a presentation of Lila's prolific weavings, cupcakes, and bidding wars on the tapestries Lila donated to the auction. It was a great event for members and friends to get together and celebrate.



Pictured at right: Past Guild Presidents Lila Nelson 1967-68 (left), Louise French 2006-07 and 2010-11 (center), Francie Iverson (right) 2005-06.

Members

Membership dues are \$50 for one year. New members can join year-round, and renewals are completed during members' anniversary months.

The following lists Guild members from September 2011 to August 2012.

Karen Aakre	Sue Bye	Linda Flanagan
Elizabeth Abbene	Connie Campbell	Betty Flannigan
Ramona Abernathy-Paine	Veronna Capone	Charlotte Forste
Carmelle Abron	Rynda Carlis	Ann Forstie
Karen Agee	Betty Glynn Carlson	Carole Forsyth
Sunday Anderjohn	Lois Cary	Ann Fox
Amy Andersen	Shelley Chase Olsen	Carla Franklin
Beverly Anderson	Katie Chmielewski	Louise French
Felicia Anderson	Jo Ann Christensen	Beth Friedman
Kathy Anderson	Judy Clare	Nancy Fulton
Marcia Anderson	Sandy Cochran	Zoe Galaitsis
Susan Andrews	Carol Colburn	Gale Woods Farm
Brenda Andrewson	Carolyn Collins	Carol Gilborn
Elizabeth Aneshansley-Leier	Kathe Connair	Therese Gimmestad
Mary Angell	Jane Connett	Kristin Gloege
Sarah Aughenbaugh	Susan Contoski	Judy Goebel
Judy Avoles	Jo Crill	Carolyn Golberg
Carolyn Azine	Rebekah Cristana	Kathy Goldner
Peggy Baldwin	Patricia Curtner	Neal Goman
Geralyn Barosso	Karen Cyson	Susan Goode
Ann Basquin	Karen Dahlen	Andy Gorrill
Ward Bauman	Barbara Daiker	Nancy Gossell
Orphy Beattie	Betty David	Kathryn Grafsgaard
Paula Beck	Marty Davidsohn	Melba Granlund
Carol Becker	Merrie Davidson	Nedra Granquist
Cecily Beierle	Pam Davis	Celeste Grant
Carolyn Belle	Lisa Deml	Donna Gravesen
Charles Benson	Kimie Dillon	Sarah Green
Sandra Bentley-Williams	Jill Dobrick	Ann Griggs
Karen Berglund	Leslie Dodd	Gayle Groebner
Jean-Marie Bergman	Sylvia Dudycha	JZ Grover
Traudi Bestler	Brenda Dunse	Wendy Guck
Mary Bishop	Nomi Dworkin	Angela Hagen
Sue Blodgett	Ann Edwards	Joan R. Haglund
Wendy Blomgren	Jeanne Eggleston	Duane Hansen
Rebecca Bohlman	Elizabeth Eide	Patty Hansen
Sandy Boily	Marcia Eide	Donna Hanson
Jack Boman	Nancy Ellison	Nancy Hanson
Rachel Boucher	Ruth Enesvedt	Elizabeth Harrington
Becca Brackett	Casey Englund	Doris Hart
Linda Brandt	Leigh Entenza	Roxanne Hart
Janet Bratkovich	Douglas Ericksen	Joyce Harter
Judy Bratt	Grace Evans	Doreen Hartzell
Deanna Brown	Stella Evans	Stephen Hauser
Lucy Brusic	Kala Exworthy	Ann Haushild
Katherine Buenger	Susan Fairchild	Jan Hayman
Ann Burgeson	Maxine Feldmeier	Jon Hayman
Kimberly Burnham	Randa Ferreira	Ellen Healy
Elizabeth Burr	Carolyn Finegan	Barbara Heath
Bonnie Buzza	Joyce Fitzgerland	Shirley Heebink



Stephen Heebink	Anne Keogh	Anna Matthes
Debbie Heilig	Jon Ketokoski	Wynne Mattila
Devin Heilm	Tiffany King	Cathie Mayr
Susan Hensel	Eleanor Kline	Barbara McCoy
Shirley Herrick	Mary Krick	Mia McDavid
Lori Hertzberg	Carole Kruttsch	Lori McKay
Jo Hill	Sue LaRosa	Beth McLaughlin
Carol Hoffman	Robbie LaFleur	Jan McNelly
Betty Hogan	Anne Lageson	Lil McRae
Elise Howell	Carolyn Lageson	Robyn Meadows
Patsy Huberty	Kathleen Lamb	Janet Meany
Emily Hudson	Rosalie Landt	Mary Memelink
Mary Huebner	Florence Larson	Nancy Menzel
Michaela Hull	Judy Larson	Joan Michel
Katherine Huntington	Karen Larson	Alison Miller
Robyn Husebye	Susan Larson Fleming	Bonnie Miller
Kathy Huset	Connie LaTendresse	Jan Miller
Kimberly Hutchens	Chillon Leach	Joan Miller
Francie Iverson	Suzaette Leizinger	Linda Miller
Sally Jacobsen	Sandra Lichter	Margaret Miller
Nancy Jameson	Sherre Lieder	Pauline Mitchell
Barb Jeffries	Jackie Lind	Jeanne Molamphy
Karla Jennings	Anne Lindgren	Arlene Monk
Angela Jerome-Tuckner	Dallas Lindgren	Barbara Moody
Audrey Johnson	Rhonda Lingen	Marilyn Moore
Carol R. Johnson	Deborah Lipkin	Rebecca Morris-Ostrom
Cindy Johnson	Angela Little	Claire Most
Cynthia Johnson	Jill Livingston	Jan Mostrom
Dawn Johnson	Mary Love	Jan Mueller
Deb Johnson	Julie Luick	Terri Mueller
Janet Johnson	Lisa Lund	Lisa Murray
Laurice Johnson	Diane Luth	Andrea Myklebust
Linette Johnson	Hazel Lutz	Denise Neisz
Patty Kuebker Johnson	Jill Lynn	Jan L. Nelson
Wayne Johnson	Rosemary MacFarlane	Janet M. Nelson
Wendy J. Johnson	Kathy Mack	Kristin Nelson
Winnie Johnson	Linda Madden	Lila Nelson <i>Honorary</i>
Jane Johnston	Judith Main	Marjorie Nelson
Bill Jones	Karen Mallin	Mary Nelson
Nancy Jones	Susan Mansfield	Patricia Nelson
Jean Jordan	Sharon Marquardt	Julie Nester
Kathleen Jordan	Kelly Marshall	Tonya Nichole
Jan Josifek	Elaine Martin	Jane Ann Nicholls
Pat Kasell	Mary Martinson	Janice Nordlund
Joan-Hannah Kaytonah	Ann Masemore	Larry James Norgren
Karen Kenny	Patricia Masrud	Penny Norman

Mel Norris
 Deborah Novak
 Cindy Novak Ardolf
 Chiaki O'Brien
 Jennifer Obst
 Paul O'Connor *Honorary*
 Maryann Olme
 Karen Olson
 Laurie Olson
 Margaret Olson
 Sandy Olson-Loy
 Mary Opsahl
 Turid Ormseth
 Deb Oswald
 Meg Otten
 Cindy Owen
 Martha Pakan
 Ann Palacek
 Virginia Parent
 Kathleen Parker
 Steve Pauling
 Judy Payne
 Loretta Pedersen
 Rod Pedley
 Tamara Peters
 Leslie Peterson
 Liz Peterson
 Maren Peterson
 Robyn Peterson
 Karin Pettijohn
 Paula Pfaff
 Margaret Pfeffer
 Kim Pfoser
 Jerry Phaff
 Mona Phaff
 Keith Pierce
 Marjore Polanek
 Solveig Pollei
 Michele Popplewell
 Judith Preckshot
 Nancy Preckshot
 Jennifer Presnell
 Judy Purman
 Nicole Quiney
 Aimee Radman
 Hema Ramaswamy
 Angela Rasmussen
 Sharon Rassier
 Teresa Razidlo
 Lynn Redlinger
 Cheryl Regenauer
 Jennifer Reicherts
 Elizabeth Rengel
 Lynne Renz
 Geri Retzlaff
 Ellen Richard
 Beth Richardson

Martha Riel
 Arleen Roberts
 Brenda Rogers
 Kate Ronald
 Anna Rosenkranz
 Betty Rosenstein
 Barbara Ruuska
 Sally Salter
 Nadine Sanders
 Nancy Sandstrom
 Eeva Savolainen
 Andrea Scamehorn
 Pam Schaber
 Emma Schaper
 Mary Jane Schauer
 Laurie Schellinger
 Lea Scherer
 Mary Kay Schladweiler
 Lu Schmidtke
 Lynne Schneider
 Nancy Schwartz
 Jill Schweps
 Cynthia Scott
 Sally Scott
 Karen Searle
 Solveig Sem
 Marjorie Ford Sethna
 Sandra Sheppard
 Madeline Shinbach
 Nancy Shinder
 Jessica Shultz
 Ellean Silva
 Lisa Skoog
 Mary Skoy
 William Smale
 Jean Smith
 Suzanne Smith
 Victoria Smith
 Anita Smits
 Mary Snelgrove
 Mary Kaye Snell
 Anna Sokolofski-Tracy
 Sandy Somdahl
 Gary Sommerfeld
 Gary Sommerfeld
 Gay Sommerfeld
 Carol St. John
 Loretta Stacy
 Myrna Stahman
 Elaine Stapleton
 Ione Stein
 Dan Stepan
 Bernadine Stephenson
 Dianne Stiff
 Sally Stinson
 Helen Stoerzinger
 Judy Stowe
 Gretchen Stratton

Linda Stratton
 Mary Strom
 Mary Sundberg
 Kristen Swan
 Karen Swanton
 Diane Syverson
 Sharon Tessman Hoiland
 Diane Tessman
 Joy Thompson
 Jere Thompson
 Natasha Thoreson
 Lisa Thornquist
 Evelyn Torkelson
 Beth Torstenson
 Doris Tuft
 Barb Van Leonen
 Victoria Veach
 Margaret Vogel Martin
 Gail Von Bargen
 Phyllis Waggoner
 Truman Walling
 Suzanne Walsh
 Barbara Wanamaker
 Zantha LaFon Warth
 Darrel Waters
 Karen Weiberg
 Joan Wells
 Colleen Werdien
 Theresa Wesley
 Sue Westlie
 Marjorie Wezeman
 Susan Wieczorek
 Peggy Wilcox
 Cheryl Wild Winter
 Sharon Wildfang
 Martha R. Willett
 Melanie Willett
 Sara Williams
 Vicki Williams
 Beth Wilson
 Betty Wilson
 Jan Wilson
 Sharon Wilson
 Jan Withoff
 Peter Withoff
 Mary Wittenbreer
 Omar Zaidi
 Roberta Shell Zeug
 Lee Zurek

Balance Sheet

August 31, 2012

ASSETS

Operating Cash	\$118,120
Cash Reserve	\$76,222
Accounts Receivable	\$1,560
Fixed Assets	\$25,792
Deferred Charges	\$497
Total Assets	\$222,191

LIABILITIES & EQUITY

Accounts Payable	\$4348
Deferred Revenue	\$11,072
Gift Certificates	\$1,655
Temporarily Restricted Net Assets	\$120
Equity	\$204,996
Total Liabilities & Equity	\$222,191

Financial Report

September 1, 2011-August 31, 2012

INCOME

Tuition (Program)	\$68,633
Government Grants	\$43,738
Fiber Source Net	\$41,241
Individual Contributions	\$27,502
Membership Dues	\$21,450
Admin. & Miscellaneous	\$9,061
Private Foundations	\$8,500
Fiber Fair Net	\$8,065
Outreach (Program)	\$1,150
Total Income	\$229,340

EXPENSES

Program	\$151,458
Management	\$38,021
Fundraising & Development	\$14,416
Office & Info. Technology	\$6,291
Advertising	\$3,434
Accounting Fees	\$2,590
Total Expenses	\$225,536
Net Income	\$3,804

- Tuition
- Government
- Fiber Source
- Individuals
- Membership
- Admin & Misc
- Private Found.
- Fiber Fair
- Outreach



- Program
- Management
- Fund. & Dev.
- Office & IT
- Advertising
- Accounting

Contributions

The following list acknowledges those donors who contributed financially during September 1, 2011 to August 31, 2012. We are very grateful for all gifts.

We extend a special thank you to the Weavers Guild of Minnesota's board of directors, for providing matching gifts during a special campaign. These generous gifts inspired many members to contribute to their Guild, and in total, nearly \$10,000 was raised.

Pictured below: Louise French, 2010-2011 President (left); Minnesota State Representative Phyllis Kahn (center); Donna Gravesen, 2012-2013 President (right). In September 2011, the Metropolitan Regional Arts Council awarded the Guild \$10,000 for Arts Activities Support.



Foundations & Government

Minnesota State Arts Board
 Metropolitan Regional Arts Council
 Harlan Boss Foundation for the Arts
 Archie D. and Bertha Walker Foundation
 Elmer L. and Eleanor J. Andersen
 Foundation
 Smith Foundation

Corporate Matching Gifts

3M
 General Mills Foundation
 Prudential Foundation

\$1000-\$2499

Anonymous (2)
 Paul O'Connor
 Cindy Owen
 Paula Pfaff

\$500-\$999

Anonymous (1)
 Sue Bye
 Louise French
 Nancy Gossell
 Donna Gravesen
 Nancy Jones
 Kathleen Jordan
 Connie LaTendresse
 Teresa Razidlo
 Geri Retzlaff
 Gordon Wilcox

\$250-\$499

Katherine Buenger
 Bonnie Buzza
 Susan Hensel
 Francie Iverson
 Patty Keubker Johnson
 Kelly Marshall
 Jere Thompson
 John G. and Lois M.
 Welshons

\$100-\$249

Susan Andrews
 Carolyn Azine
 Mary Gleason Best
 Peggy Baldwin
 Jan Hayman
 Jo Hill
 Sharon Tessman Hoiland
 Patsy Huberty
 Wayne Johnson
 Lisa Lund
 Susan Mansfield
 Wynne Mattila
 Janet Meany

\$100-\$249

Nancy Menzel
 Janice Mostrom
 Jan L. Nelson
 Janet M. Nelson
 Julie Nester
 Turid Ormseth
 Maren Peterson
 Keith Pierce
 Madeline Shinbach
 Mary Skoy
 Ione Stein
 Kim Vanderwall
 Mary Wilcox
 Roberta Zeug Shell

\$10-\$99

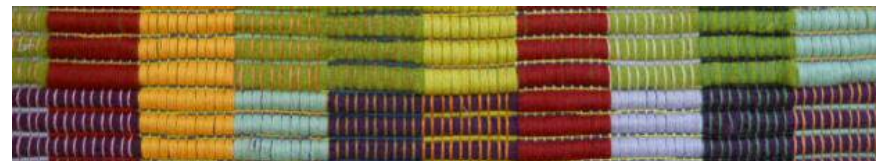
Anonymous (9)
 Charles Benson
 Elizabeth Brackett
 Maria Damon
 Sharla Donohue
 Susan Emerson
 Doug Ericksen
 Becky Franklin

\$10-\$99

Nancy Fulton
 Nedra Granquist
 Gayle Groebner
 Katherine Grossman
 JZ Grover
 Elizabeth Harrington
 Nancy Hanson
 Ann Haushild
 Ellen Healy
 Robyn Husebye
 Robbie LaFleur
 Chillon Leach
 Anne Lindgren
 Patricia Lovegreen
 Diane Luth
 Rosemary MacFarlane

Linda Madden
 Beth McLaughlin
 Robyn Meadows
 Arlene Monk
 Barbara Moody
 Lila Nelson
 Laurie K. Olson
 VaLinda Pearsons
 Solveig Pollei
 Judith Preckshot
 Lynne Renz
 Martha Riel
 Leah Rogers
 Cynthia Scott
 Sally Scott
 William Smale
 Myrna Stahman

Sally Stinson
 Dianne Stiff
 Helen Stoerzinger
 Judy Stowe
 Beverly Tesch
 Evelyn Torkelson
 Beth Torstenson
 Victoria Veach
 Margaret Vogel-Martin
 Phyllis Waggoner
 Maryann Watters
 Marjorie Wezeman
 Wendy West
 Martha R Willett
 Beth Wilson



The following list acknowledges the donors who contributed items to the 3rd Annual Silent Auction in April 2012, as well as the winning bidders who took the items home. Close to \$5,000 was raised from the auction.

Anonymous (1)
 Brenda Andrewson
 Carolyn Azine
 Peggy Baldwin
 Traudi Bestler
 Judy Bratt
 Lucy Brusic
 Katherine Buenger
 Anne Burgeson
 Kimberly Burnham
 Bonnie Buzza
 Sue Bye
 Debra Caron
 Carol Colburn
 Jane Connett
 Kala Exworthy
 Becky Franklin
 Louise French
 Carolyn Golberg
 Nancy Gosell
 Nedra Granquist
 Ann Griggs
 Linda Hansen
 Jan Hayman

Jon Hayman
 Susan Hensel
 Ruth Howell
 Patsy Huberty
 Francie Iverson
 Carol R. Johnson
 Winnie Johnson
 Patty Kuebker Johnson
 Kathleen Jordan
 Robbie LaFleur
 Judith Lang Main
 Judy Larson
 Chillon Leach
 Sue Leizinger
 Anne Lindgren
 Kathy Mack
 Kelly Marshall
 Ann Masemore
 Cathie Mayr
 Linda Miller
 Ashley Mulliken
 Lisa Murray
 Lila Nelson
 Maryann Olme

Shelley Olsen
 Cindy Owen
 Jane Patrick
 Steve Pauling
 Paula Pfaff
 Judith Preckshot
 Lynne Renz
 Geri Retzlaff
 Larry Retzlaff
 Ellen Richard
 Nadine Sanders
 Madeline Shinbach
 Mary Skoy
 Anita Smits
 Mary Snelgrove
 Carol St. John
 Dianne Stiff
 Judy Stowe
 Jere Thompson
 Emily Wise
 Handweavers Guild of
 America



**Board of Directors
2012-2013**

Donna Gravesen, President
Ellen Richard, President-Elect
Margaret Baldwin, Secretary
Geri Retzlaff, Treasurer
Cathie Mayr, Past President
Jere Thompson, Membership Chair
Steve Pauling, Volunteer Coordinator
Peter Withoff
Jackie Lind
Gayle Groebner
Jan Hayman

**Board of Directors
2011-2012**

Cathie Mayr, President
Donna Gravesen, President-Elect
Margaret Baldwin, Secretary
Nancy Gossell, Treasurer
Louise French, Past President
Ellen Richard, Education Chair
Sue Bye, Development Rep
Jere Thompson, Membership Chair
Steve Pauling, Volunteer Coordinator
Peter Withoff
Jan Nelson
Geri Retzlaff

Staff Linda Hansen, Education Director
Cindi Paulsen, Office Assistant

Becky Franklin, Operations Manager



Weavers Guild of Minnesota

3000 University Ave SE, Minneapolis, MN 55414
612-436-0463 www.weaversguildmn.org

WGM - Preserving and advancing the arts of weaving, spinning and dyeing.

